

ROL

S 25



INDEX

ROL Group _____	1
Upright 50 _____	2 - 4
Upright 70 _____	5 - 6
Back Panel _____	7
Back Panel Configuration _____	8 - 10
Shelf _____	11 - 12
Wire Shelf _____	13 - 14
Bracket _____	15
Hook & Hookbar _____	16
Contacts _____	17



ROL PRODUCTION

The ROL Group of Companies has provided innovative retail solutions to its global client base for more than twenty years.

ROL Production services both clients with sheet metal and tubular components.

With thousands of square meters of manufacturing, design and distribution facilities spread across our global network of branch locations; we devote resources, technology and expertise to your business.

From our state-of-the-art facility in Sweden to continuously updated facilities from Lithuania to China, the ROL Production network provides us with the capabilities and flexibility to manage your projects in the most efficient and cost-effective way possible.

Global sourcing and national pricing allow us to offer better cost and quality controls.

Strategic global alliances let us bring you cost effective solutions.

Blending foreign and domestic manufacturing and materials cuts costs and speeds delivery.

Our multiple facilities give us greater flexibility in managing your products and lower transportation costs.

Our mission is to provide 'cost effective solutions to our customers at all times'.

Our vision is to remain our customers' first choice when looking for a supplier of sheet metal and tubular components.



ENVIRONMENTAL PROTECTION BY USING POWDER COATING

Powder coating is the most modern coating technology for shop fittings. Powder coating is outstandingly in terms of saving the environment and offers the best surface.

The powder coating system selected by ROL is a special epoxy and polyester resin. The powder is applied to the metal using an electrostatic dry spraying technique. This process is highly efficient in coating all parts of the metal whilst reducing waste.

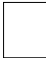

The powder coating offers resistance to household detergents and agents in food, chemicals such as diluted acids, oil and petrol.

The powder coatings are neutral in taste and smell.

COLOUR CODES

The colour code for an item is the two last digits in the item number. When ordering you must fill in the colour code required, by replacing the two XX with the colour code in the item number.

STANDARD COLOURS

ROL 17 RAL 9010	code 17	
ROL 93 RAL 9006	code 93	

For more colour choices, please contact our sales office.





The uprights and base feet are welded together. Uprights can be offered in "T", "L" & "I" versions. ROL Standard System S25 has been designed as a modern single sided or gondole shelving and display system. S 25 can offer two dimensions of uprights and a variation of shelvings.

UPRIGHT: 70X25, 50x25 Pitch 32

STANDARD FEET LENGTH 70X25: 400, 500, 600

STANDARD FEET LENGTH 50X25: 300, 400, 500

STANDARD HEIGHTS FOR UPRIGHT 70X25: L : 1200, 1400, 1600, 2000
2200, 2400, 3000

T : 1400, 1600

I : 2400

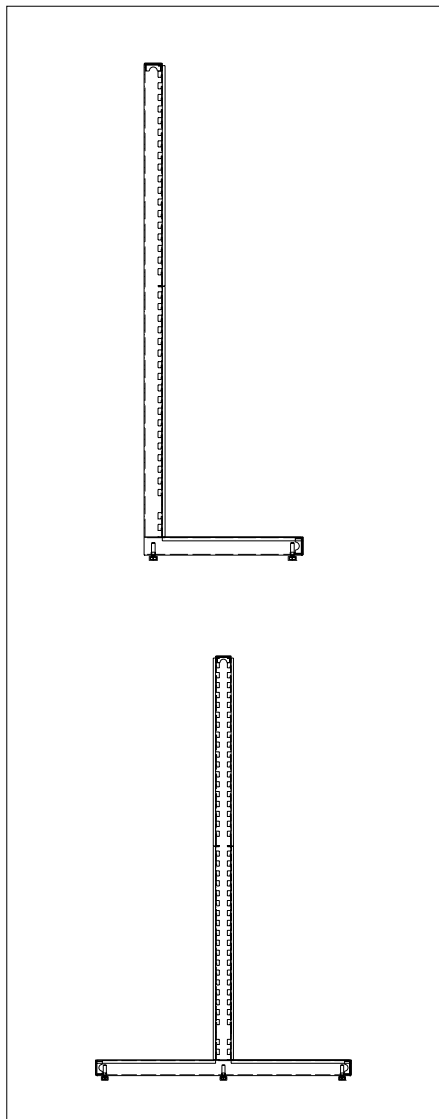
STANDARD HEIGHTS FOR UPRIGHT 50X25: L : 1000, 1200, 1350, 1600
2000, 2200, 2400

T : 1200, 1350, 1600

I : 2400

STANDARD MODULE WIDTH: 600, 900, 1000

STANDARD SHELVING DEPTH: 200, 300, 400, 500, 600



L - UPRIGHT 50 X 25

Description:	Dimensions:		Part. No:
300 X 1000	A) 333	B) 966	127 046XX
400 X 1000	A) 433	B) 966	111 011XX
500 X 1000	A) 533	B) 966	111 012XX
300 X 1200	A) 333	B) 1158	111 013XX
400 X 1200	A) 433	B) 1158	111 014XX
500 X 1200	A) 533	B) 1158	111 015XX
300 X 1350	A) 333	B) 1350	111 016XX
400 X 1350	A) 433	B) 1350	640 70XX
500 X 1350	A) 533	B) 1350	640 69XX
300 X 1600	A) 333	B) 1574	127 047XX
400 X 1600	A) 433	B) 1574	127 048XX
500 X 1600	A) 533	B) 1574	127 049XX
300 X 2000	A) 333	B) 1958	127 050XX
400 X 2000	A) 433	B) 1958	127 051XX
500 X 2000	A) 533	B) 1958	127 052XX
300 X 2200	A) 333	B) 2182	127 053XX
400 X 2200	A) 433	B) 2182	127 054XX
500 X 2200	A) 533	B) 2182	127 055XX
300 X 2400	A) 333	B) 2347	102 86XX
400 X 2400	A) 433	B) 2347	102 62XX
500 X 2400	A) 533	B) 2347	102 63XX

T - UPRIGHT 50 X 25

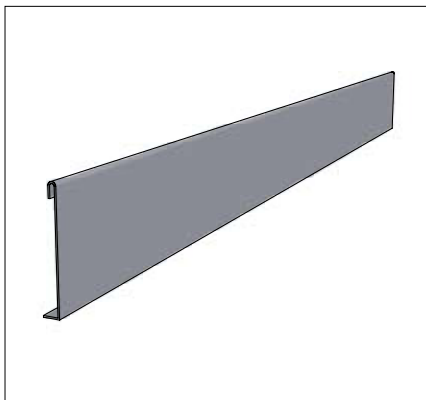
Description:	Dimensions:		Part. No:
300 X 1200	A) 616	B) 1158	113 120XX
400 X 1200	A) 816	B) 1158	111 021XX
500 X 1200	A) 1016	B) 1158	113 437XX
300 X 1350	A) 616	B) 1350	111 023XX
400 X 1350	A) 816	B) 1350	111 022XX
500 X 1350	A) 1016	B) 1350	127 056XX
300 X 1600	A) 616	B) 1574	127 057XX
400 X 1600	A) 816	B) 1574	127 058XX
500 X 1600	A) 1016	B) 1574	127 059XX

I - UPRIGHT 50 X 25

Description:	Dimensions:		Part. No:
2400	A) -	B) 2374	104 61XX

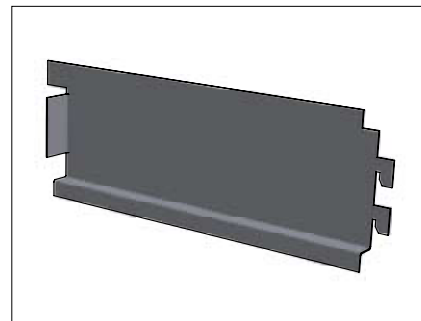
I - UPRIGHT 25 X 25

Description:	Dimensions:		Part. No:
2400	A) - B) 2374		104 75XX



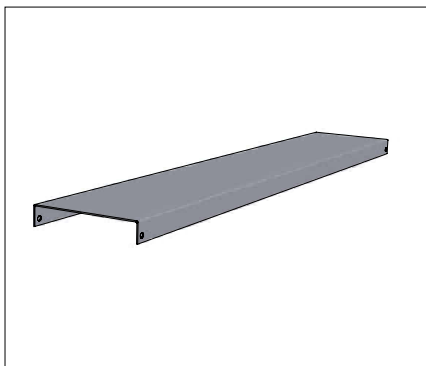
KICKPLATE 50 X 25

Description:	Part. No:
600	320 01XX
900	320 02XX
1000	114 402XX
IC 45° 400	320 03XX
IC 45° 500	320 04XX
IC 90° 400	320 12XX
IC 90° 500	320 13XX
OC 90° 400	320 10XX
OC 90° 500	320 14XX



BASE BRACKET

Description:	Part. No:
300 right	160 61XX
300 left	160 62XX
400 right	160 63XX
400 left	160 64XX
500 right	160 65XX
500 left	160 66XX
IC 45° 400 right	160 67XX
IC 45° 400 left	160 68XX
IC 45° 500 right	160 69XX
IC 45° 500 left	160 70XX
IC 90° 400 right	160 71XX
IC 90° 400 left	160 72XX
IC 90° 500 right	160 73XX
IC 90° 500 left	160 74XX
OC 90° 400 right	161 01XX
OC 90° 400 left	161 02XX
OC 90° 500 right	161 03XX
OC 90° 500 left	161 04XX
END 400 right	113 130XX
END 400 left	113 133XX



TOPCOVER

Description:	Part. No:
600 X 68	305 46XX
900 X 68	305 47XX
1000 X 68	114 399XX
600 X 68 CLIP-ON	306 21XX
900 X 68 CLIP-ON	306 22XX
1000 X 68 CLIP-ON	127 091XX
600 X 68 OL	302 08XX
900 X 68 OL	302 07XX
1000 X 68 OL	114 401XX



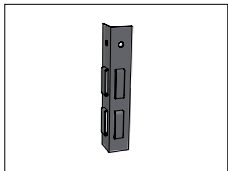
GONDOLA ENDFRAME 50 X 25

Description:	Part. No:
900 X 1200 1000 X 1200	113 121XX 127 061XX
900 X 1350 1000 X 1350	113 123XX 127 062XX
900 X 1600 1000 X 1600	127 063XX 127 064XX



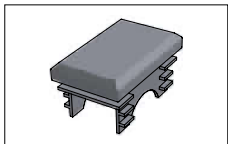
GONDOLA ENDFIXTURE

Description:	Part. No:
	306 50 XX



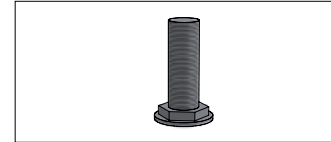
CORNER FIXING

Description:	Part. No:
90 DEG. 60 DEG.	300 20 92 300 21 92



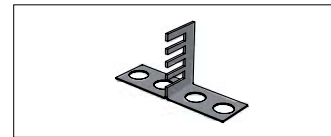
END CAP 50 X 25

Description:	Part. No:
	302 50 17



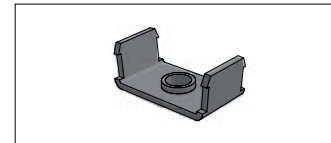
ADJUSTABLE FOOT FOR UPRIGHT

Description:	Part. No:
M 10X42	300 10 20



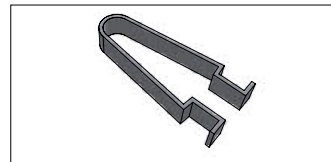
WALL FIXING FOR UPRIGHT

Description:	Part. No:
	306 01 92



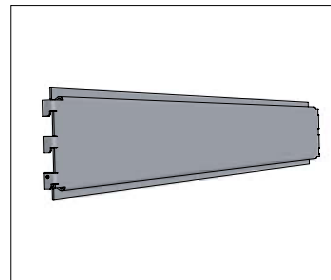
FOOT FOR UPRIGHT 50 X 25

Description:	Part. No:
	300 50 92



LOCKING CLIP

Description:	Part. No:
	304 94 00



BACK PANEL OL/BASIC

Description:	Part. No:
600 900 1000	205 10XX 205 12XX 114 445XX
IC 45°	205 14XX
IC 90°	205 15XX

L - UPRIGHT 70 X 25

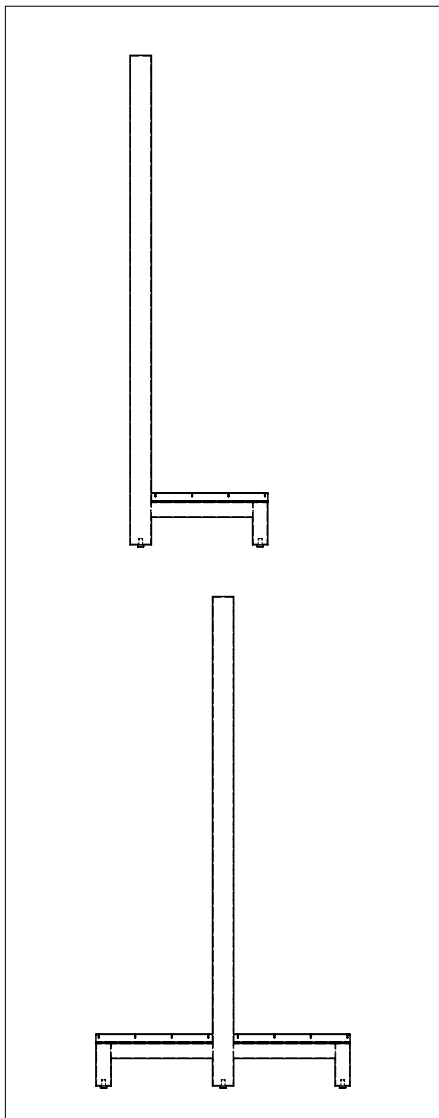
Description:	Dimensions:		Part. No:
400 X 1200	A) 453	B) 1191	127 067XX
500 X 1200	A) 553	B) 1191	127 068XX
600 X 1200	A) 653	B) 1191	127 069XX
400 X 1400	A) 453	B) 1383	106 40XX
500 X 1400	A) 553	B) 1383	106 41XX
600 X 1400	A) 653	B) 1383	106 42XX
400 X 1600	A) 453	B) 1607	106 37XX
500 X 1600	A) 553	B) 1607	106 38XX
600 X 1600	A) 653	B) 1607	106 39XX
400 X 2000	A) 453	B) 1991	127 070XX
500 X 2000	A) 553	B) 1991	127 071XX
600 X 2000	A) 653	B) 1991	127 072XX
400 X 2200	A) 453	B) 2215	127 073XX
500 X 2200	A) 553	B) 2215	127 074XX
600 X 2200	A) 653	B) 2215	127 075XX
400 X 2400	A) 453	B) 2407	106 34XX
500 X 2400	A) 553	B) 2407	106 35XX
600 X 2400	A) 653	B) 2407	106 36XX
400 X 3000	A) 453	B) 2983	127 076XX
500 X 3000	A) 553	B) 2983	127 077XX
600 X 3000	A) 653	B) 2983	127 078XX

T - UPRIGHT 70 X 25

Description:	Dimensions:		Part. No:
400 X 1400	A) 836	B) 1383	106 49XX
500 X 1400	A) 1036	B) 1383	106 50XX
600 X 1400	A) 1236	B) 1383	106 51XX
400 X 1600	A) 836	B) 1607	106 46XX
500 X 1600	A) 1036	B) 1607	106 47XX
600 X 1600	A) 1236	B) 1607	106 48XX

UPRIGHT 70 X 25

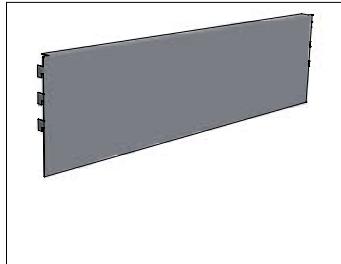
Description:	Dimensions:		Part. No:
2400	A) -	B) -	104 72XX





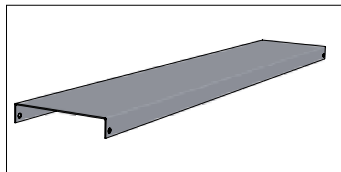
ENDRAME FOR 70 X 25

Description:	Part. No:
900 X 1400	127 082XX
1000 X 1400	127 083XX
900 X 1600	127 084XX
1000 X 1600	127 085XX



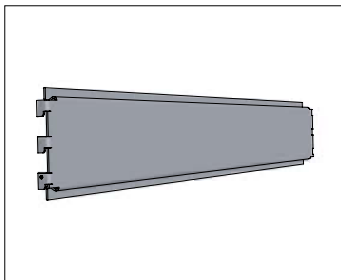
KICKAPLATE 70 X 25

Description:	Part. No:
600	206 00XX
900	206 06XX
1000	114 403XX
600 REINF.	321 53XX
900 REINF.	321 52XX
1000 REINF.	127 092XX



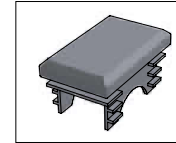
TOPCOVER

Description:	Part. No:
600 X 88	127 079XX
900 X 88	127 080XX
1000 X 88	127 081XX



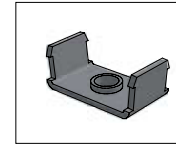
BACK PANEL OL/BASIC

600	205 10XX
900	205 12XX
1000	114 445XX
IC 45°	205 14XX
IC 90°	205 15XX



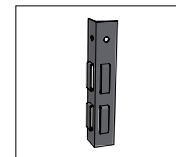
END CAP 70 X 25

Description:	Part. No:
	302 70XX



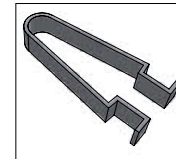
FOOT FOR UPRIGHT 70 X 25

Description:	Part. No:
	300 75 92



CORNER FIXING

Description:	Part. No:
90 DEG.	300 20 92
60 DEG.	300 21 92



LOCKING CLIP

Description:	Part. No:
	304 94 00

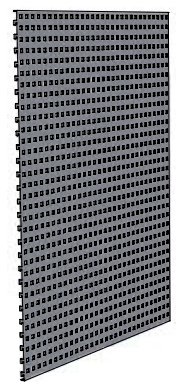
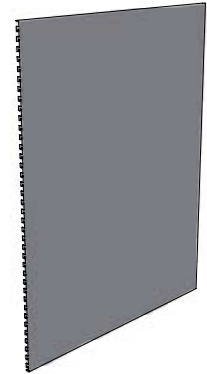
UPRIGHTS (50/70 x 25)

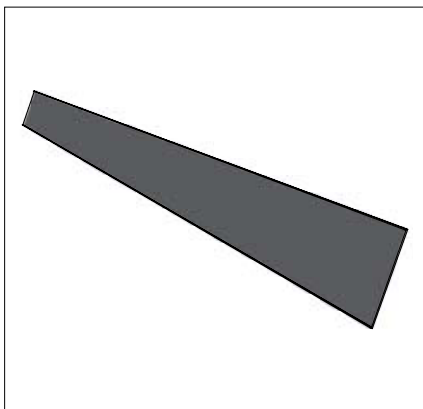
Upright height:	Module width:	CONFIGURATION ONE SIDE		
		608	416	160
1000	600	2		
1200	600	1	1	
1350	600	2		
1400	600	2		
1600	600	1	2	
2000	600	3		
2200	600	2	2	
2400	600	3	1	
3000	600	3	2	1
1000	900	2		
1200	900	1	1	
1350	900	2		
1400	900	2		
1600	900	1	2	
2000	900	3		
2200	900	2	2	
2400	900	3	1	
3000	900	3	2	1
1000	1000	2		
1200	1000	1	1	
1350	1000	2		
1400	1000	2		
1600	1000	1	2	
2000	1000	3		
2200	1000	2	2	
2400	1000	3	1	
3000	1000	3	2	1

END FRAMES (50/70 X 25)

Upright Height:	Module Width:	CONFIGURATION ONE SIDE			
		608	416	160	Kickplate/135
1200	900	1	1		1
1350	900	2			1
1400	900	2			1
1600	900	1	1		1
1200	1000	1	1		1
1350	1000	2			1
1400	1000	2			1
1600	1000	1	1		1

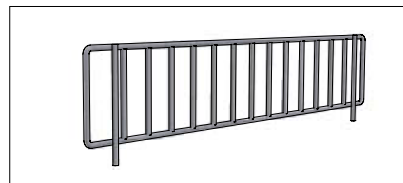
BACK PANEL SOLID				
Module Width	608 Item no	416 Item no	160 Item no	Type
600	207 97XX	207 95XX	208 23XX	SOLID
900	207 98XX	207 96XX	208 13XX	SOLID
1000	114 396XX	114 395XX	114 449XX	SOLID
INNER CORNER				
IC 45°	208 01XX	207 99XX	-	SOLID
IC 90°	208 02XX	208 00XX	-	SOLID
BACK PANEL PERF.				
Module Width	608 Item no	416 Item no	160 Item no	Type
600	208 05XX	208 03XX	-	PERF.
900	208 06XX	208 04XX	-	PERF.
1000	114 398XX	114 397XX	-	PERF.
INNER CORNER				
IC 45°	208 09XX	208 07XX	-	PERF.
IC 90°	208 10XX	208 08XX	-	PERF.





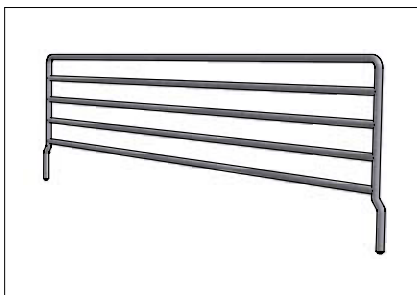
ACRYLIC FRONT RISER 3MM

Description:	Part. No:	
600 X 90	119 050 00	
900 X 90	119 049 00	
1000 X 90	114 433 00	
IC 45° X 90	300	127 203 00
IC 45° X 90	400	127 204 00
IC 90° X 90	300	127 205 00
IC 90° X 90	400	127 206 00
OC 90° X 90	300	127 207 00
OC 90° X 90	400	127 208 00



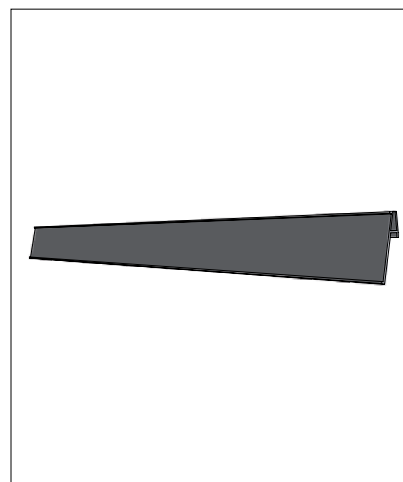
WIREFRONT

Description:	Part. No:	
600 X 90	260 06XX	
900 X 90	260 90XX	
1000 X 90	114 459XX	



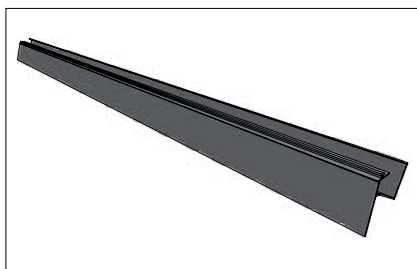
WIRE DIVIDER

Description:	Part. No:	
200 X 90	260 20XX	
300 X 90	260 30XX	
400 X 90	260 40XX	
500 X 90	260 50XX	
600 X 90	260 60XX	
400 X 250	262 02XX	
500 X 250	262 03XX	



TICKETRAL SELFADHESIVE

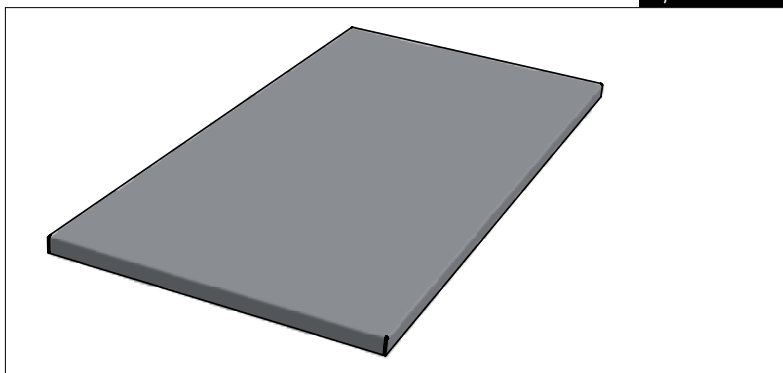
Description:	Part. No:	
600 X 26	343 31 00	
900 X 26	343 30 00	
1000 X 26	114 410 00	
600 X 26	25°	343 63 00
900 X 26	25°	343 62 00
1000 X 26	25°	127 065 00
600 X 39	343 34 00	
900 X 39	343 33 00	
1000 X 39	114 411 00	
600 X 39	25°	343 64 00
900 X 39	25°	343 65 00
1000 X 39	25°	115 529 00



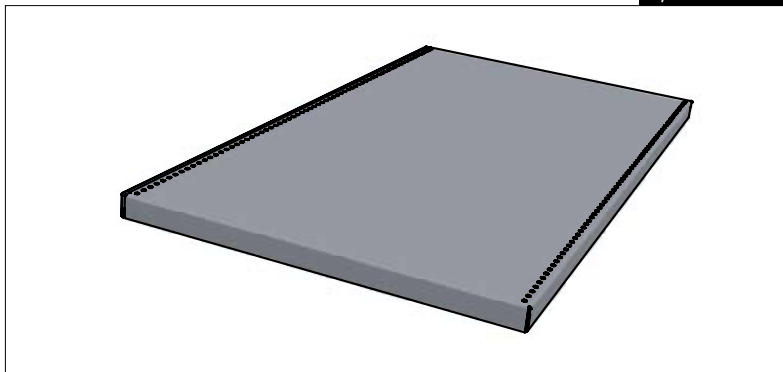
TICKETRAL SHELF OPTIMAL

Description:	Part. No:	
600 X 26	117 001 00	
900 X 26	117 002 00	
1000 X 26	114 406 00	
600 X 39	117 003 00	
900 X 39	117 004 00	
1000 X 39	114 407 00	

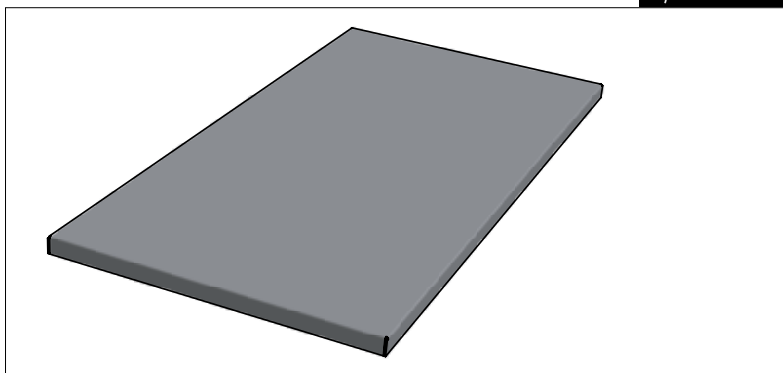
A) 30mm Thick



B) 30mm Thick



C) 20mm Thick



A) SHELF OPTIMAL

Description:	Part. No:
600 X 200	145 61XX
600 X 300	145 62XX
600 X 400	145 63XX
600 X 500	145 64XX
600 X 600	127 093XX
900 X 200	145 65XX
900 X 300	145 66XX
900 X 400	145 67XX
900 X 500	145 68XX
900 X 600	127 094XX
1000 X 200	114 412XX
1000 X 300	114 413XX
1000 X 400	114 414XX
1000 X 500	114 415XX
1000 X 600	114 416XX
IC 45° X 300	145 70XX
IC 45° X 400	145 71XX
IC 45° X 500	145 72XX
IC 90° X 300	145 74XX
IC 90° X 400	145 75XX
IC 90° X 500	145 76XX
OC 90° X 300	145 78XX
OC 90° X 400	145 79XX
OC 90° X 500	145 80XX

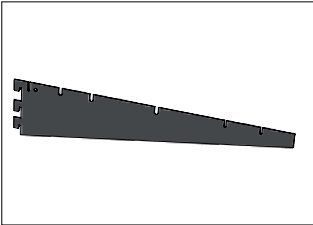
B) SHELF OPTIMAL U-PROFILE

Description:	Part. No:
600 X 200	119 041XX
600 X 300	119 042XX
600 X 400	119 043XX
600 X 500	119 044XX
600 X 600	127 095XX
900 X 200	119 045XX
900 X 300	119 046XX
900 X 400	119 047XX
900 X 500	119 048XX
900 X 600	127 096XX
1000 X 200	114 418XX
1000 X 300	114 419XX
1000 X 400	114 420XX
1000 X 500	114 421XX
1000 X 600	127 097XX
IC 45° X 300	115 553XX
IC 45° X 400	115 554XX
IC 90° X 300	115 555XX
IC 90° X 400	115 556XX
OC 90° X 300	127 098XX
OC 90° X 400	127 099XX

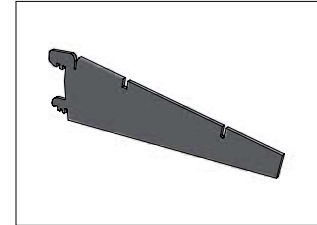
C) SHELF SLIM

Description:	Part. No:
600 X 200	142 76XX
600 X 300	142 78XX
600 X 400	142 82XX
600 X 500	142 84XX
600 X 600	142 88XX
900 X 200	142 77XX
900 X 300	142 79XX
900 X 400	142 83XX
900 X 500	142 87XX
900 X 600	142 89XX

BRACKET STRAIGHT



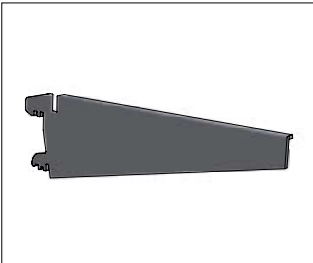
Description:	Part. No:
400	168 50XX
500	168 51XX
600	168 59XX



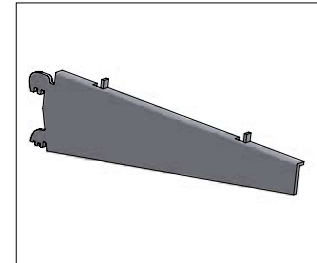
BRACKET ADJUSTABLE

Description:	Part. No:	
200	160 01XX	
300	160 02XX	
400	160 04XX	
500	SLOPING 24°	160 32XX

BRACKET FOR GLASS



Description:	Part. No:
200 right	124 029XX
300 right	160 33XX
400 right	127 201XX
200 left	124 030XX
300 left	160 34XX
400 left	127 202XX



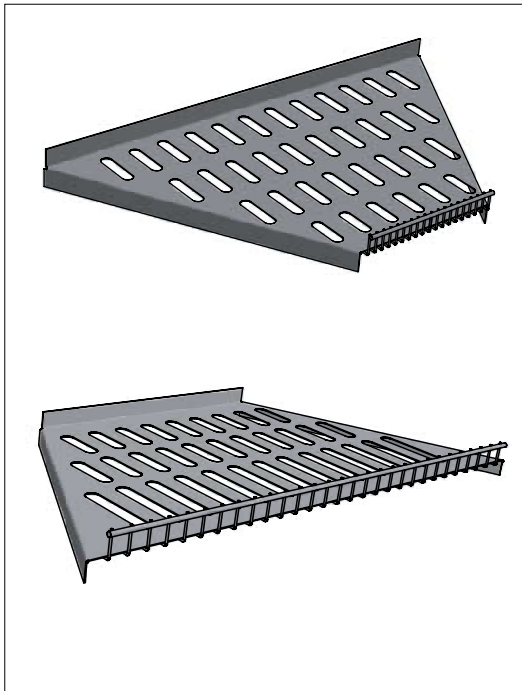
BRACKET FOR WOOD

Description:	Part. No:
300 right	161 87XX
400 right	161 89XX
300 left	161 88XX
400 left	161 902XX



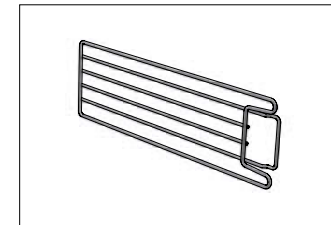
WIRESHELF

Description:	Part. No:
600 X 200	122 00XX
600 X 300	122 02XX
600 X 400	122 04XX
600 X 500	122 06XX
900 X 200	122 01XX
900 X 300	122 09XX
900 X 400	122 05XX
900 X 500	122 07XX
1000 X 200	114 426XX
1000 X 300	114 427XX
1000 X 400	114 428XX
1000 X 500	114 429XX



WIRESHELF CORNER

Description:	Part. No:	
IC 45° X 200	SLOPING 24°	122 22XX
IC 45° X 300	SLOPING 24°	122 32XX
IC 45° X 400	SLOPING 24°	122 33XX
IC 90° X 200	SLOPING 24°	122 28XX
IC 90° X 300	SLOPING 24°	122 36XX
IC 90° X 400	SLOPING 24°	122 37XX
OC 90° X 200	SLOPING 24°	122 24XX
OC 90° X 300	SLOPING 24°	122 25XX
OC 90° X 400	SLOPING 24°	122 26XX
IC 45° X 300	HORIZONTAL	122 08XX
IC 45° X 400	HORIZONTAL	122 03XX
IC 45° X 500	HORIZONTAL	122 13XX
IC 90° X 300	HORIZONTAL	122 30XX
IC 90° X 400	HORIZONTAL	122 31XX
IC 90° X 500	HORIZONTAL	122 34XX
OC 90° X 300	HORIZONTAL	122 14XX
OC 90° X 400	HORIZONTAL	122 15XX
OC 90° X 500	HORIZONTAL	122 35XX



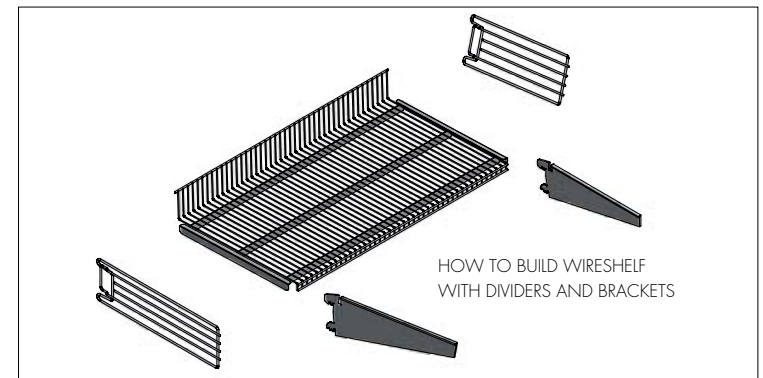
DIVIDER WIRESHELF

Description:	Part. No:
200 X 90	260 10XX
300 X 90	260 11XX
400 X 90	260 12XX
500 X 90	260 13XX
600 X 90	261 21XX

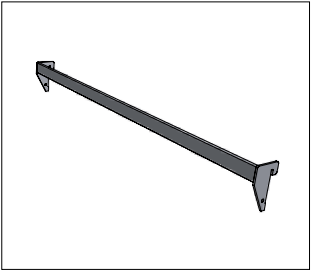


TICKETRAIL WIRESHELF

Description:	Part. No:
600 X 26	343 06 00
600 X 39	343 37 00
900 X 26	343 09 00
900 X 39	343 36 00
1000 X 26	114 408 00
1000 X 39	114 409 00

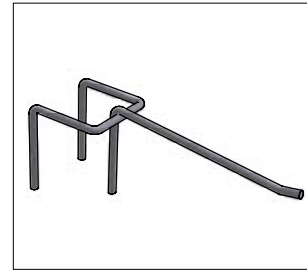


HOOKBAR



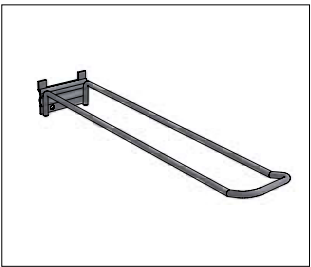
Description:	Part. No:
600	340 60XX
900	340 90XX
1000	114 436XX
IC 45°	340 65XX
IC 90°	340 95XX

HOOK FOR BAR, SINGLE



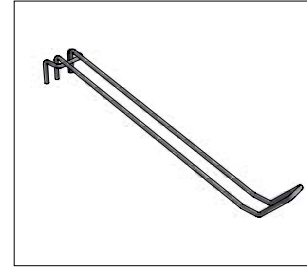
Description:	Part. No:
150	288 15XX
200	288 20XX
250	288 25XX
300	288 31XX

HOOK FOR PEGB.



Description:	Part. No:
150	281 15XX
200	281 20XX
300	281 30XX
150 X 28	285 15XX
200 X 28	285 20XX
300 X 28	285 30XX

HOOK FOR BAR



Description:	Part. No:
150 X 28	284 15XX
200 X 28	284 20XX
250 X 28	284 25XX
300 X 28	284 30XX

TICKETRAIL FOR EUROHOOK

Description:	Part. No:
32 X 27	119 432 00

RAIL-T MAGNETIC (When not using integrated T-rail/Ticketrail)

Item no.	Dimension
15590200	600
15531000	900
15590500	1300

RAIL-T SELF ADHESIVE (When not using integrated T-rail/Ticketrail)

Item no.	Dimension
13057300	600
13057400	900
15509400	1300

PUSHER PLATE

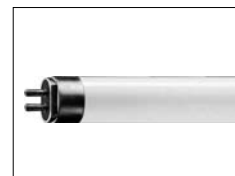
Item no.	Dimension	
A 15531300	49x80	Transp.
B 15589800	75x130	Transp.
C 15589900	75x130	Grey 2 ways

PUSHER WIDTH 40

Item no.	Dimension
15531600	40/67-550/2N Grey
15531700	40/67-550/4N
15531800	40/67-550/6N
15531900	40/67-550/10N
15532000	40/67-550/14N

DIVIDER CLEAR PLASTIC FOR RAIL-T

Item no.	Dimension
D 15511500	285-485X60
15511600	510-635X60
E 15512700	285-485x120
15512800	510-635x120



LUMINAIRE FITTING
INCL. FLUORESCENT TUBE 830

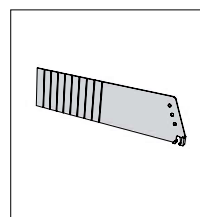
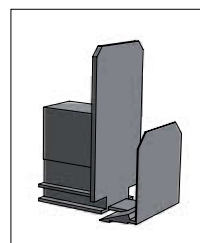
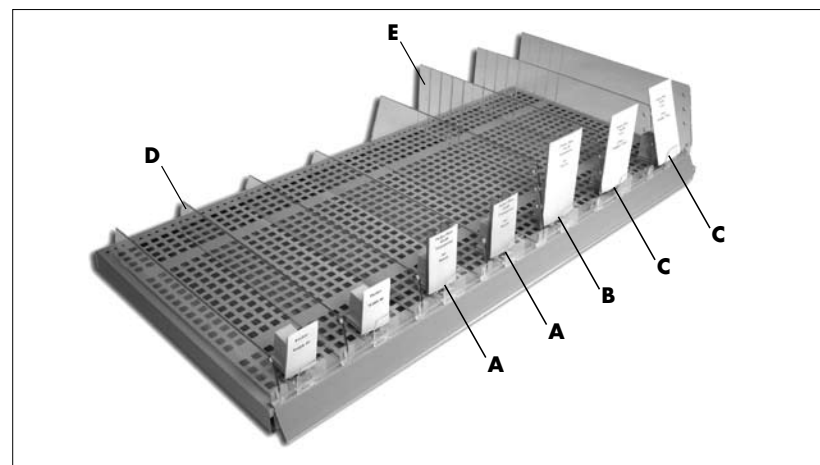
Item no.	Dimension
13877200	Lum Fitting Shelf T5 1x14W <600>
13877300	Lum Fitting Shelf T5 1x21W <900>
13877500	Lum Fitting Shelf T5 1x28W<1300>

FLUORESCENT TUBE (FOR REPLACEMENT)

Item no.	Dimension
4260000	Fluo.Tube T5 14W/830 W W 3000K
4260100	Fluo.Tube T5 21W/830 W W 3000K
4260200	Fluo.Tube T5 28W/830 W W 3000K

CABLE

Item no.	Dimension
13877600	Start 5m EU Plug with schuko/white
13877700	Serie Connection 2m/white



REQUIREMENTS

- All loads are calculated in kilograms (kg).
- Uniform loads are calculated for all shelves.
- Maximum deflection on mid point of the front edge is 5mm.
- Wall brackets are always required if the uprights are taller than 1600 or when the load is bigger than 120kg per section.
- The wall bracket must be fixed higher than 80% of the total height of the upright.
- The load for a T-gondola, allow for up to 50% uneven load between the sides, excl. base shelves.

TABLE 1 MAXIMUM UNIFORM LOAD FOR SHELF AND BRACKETS

	Depth 200	Depth 300	Depth 400	Depth 500	Depth 600
Length 600	80	80	80	80	80
Length 900	80	80	80	80	80
Length 1000	80	80	80	80	80

TABLE 2 MAXIMUM UNIFORM LOAD FOR BASE SHELF

	Depth 300	Depth 400	Depth 500
Length 600	80	120	120
Length 900	80	120	120
Length 1000	80	120	120

TABLE 3 TOTAL MAXIMUM LOAD PER SECTION EXCL. BASE SHELF.

DITTO MAXIMUM LOAD FOR T-GONDOLA, (IN PARENTHESIS). (*) DEPTH NOT RECOMMENDED!

UPRIGHT TUBE DIMENSION 50X25

	Depth 200	Depth 300	Depth 400	Depth 500	Depth 600
Height 1200	400 (200)	400 (200)	400 (200)	300 (*)	250 (*)
Height 1400	400 (200)	400 (200)	400 (200)	300 (*)	250 (*)
Height 1600	400 (200)	400 (200)	400 (200)	300 (*)	250 (*)
Height 2000	400	400	400	400	400
Height 2200	400	400	400	400	400
Height 2400	400	400	400	400	400

TABLE 3 TOTAL MAXIMUM LOAD PER SIDE ON GONDOLA SECTION

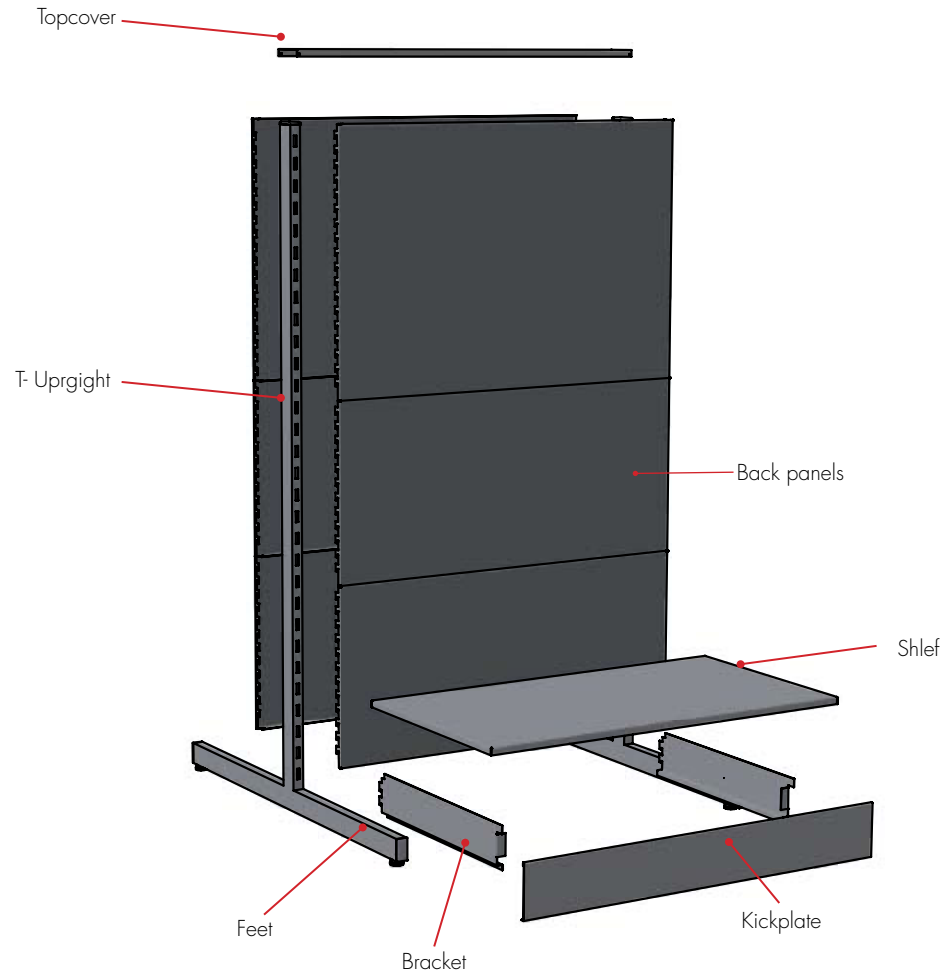
DITTO MAXIMUM LOAD FOR T-GONDOLA, (IN PARENTHESIS). (*) DEPTH NOT RECOMMENDED!

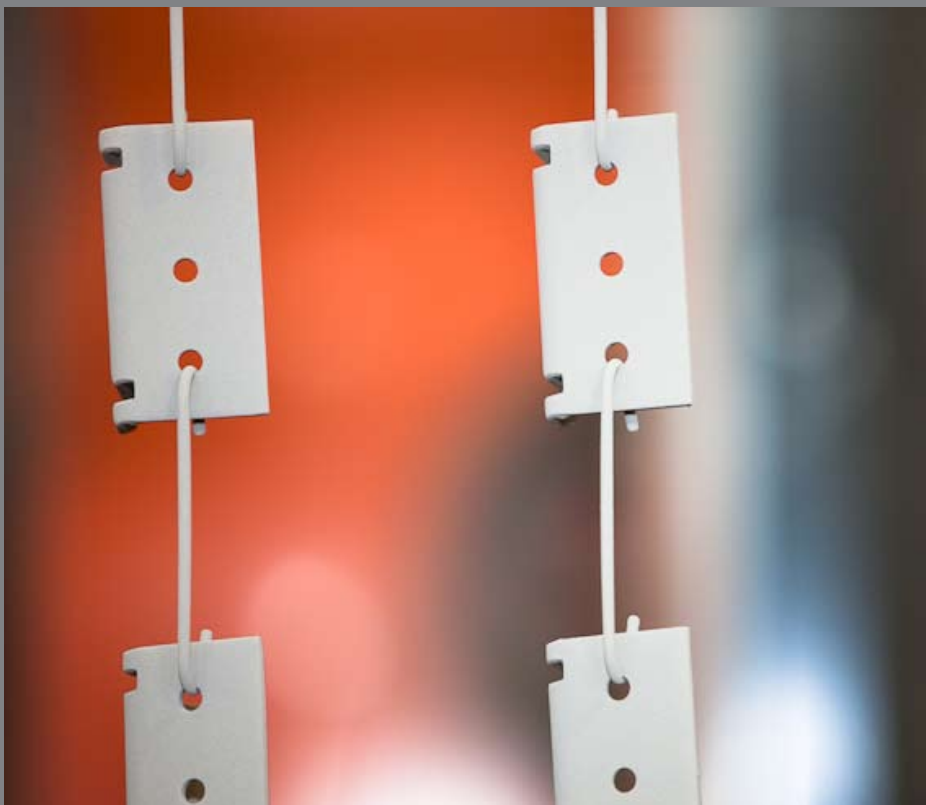
UPRIGHT TUBE DIMENSION 70X25

	Depth 200	Depth 300	Depth 400	Depth 500	Depth 600
Height 1200	500 (250)	500 (250)	500 (250)	400 (*)	350 (*)
Height 1400	500 (250)	500 (250)	500 (250)	400 (*)	350 (*)
Height 1600	500 (250)	500 (250)	500 (250)	400 (*)	350 (*)
Height 2000	500	500	500	500	500
Height 2200	500	500	500	500	500
Height 2400	500	500	500	500	500
Height 3000	500	500	500	500	500

TABLE 3 TOTAL MAXIMUM LOAD FOR GONDOLA END FRAME

	Depth 300	Depth 400
Height 1200	250	250
Height 1350	250	250
Height 1600	250	250







Cost Effective Solutions



OFFICES

ROL GROUP HQ

ROL AB

Flygplatsvägen 1
SE-555 93 Jönköping
Sweden
E-mail: info@rolgroup.com
Phone: +46 36 36 88 00
Fax: +46 36 36 88 90
www.rolgroup.com

ROL PRODUCTION AB

Flygplatsvägen 1
SE-555 93 Jönköping
Sweden
E-mail: info@rolproduction.com
Phone: +46 36 36 88 00
Fax: +46 36 36 88 90
www.rolproduction.com

EUROPE

ROL MOBEX France

42, rue Guy Môquet
F-75017 Paris
France
Phone: +33 1 42 29 65 59
Fax: +33 1 42 29 65 74

ROL STATGA

Liejyklos st. 8,
LT-78147 Šiauliai,
Lithuania
Phone/Fax: +370 41 507770

ROL Germany GmbH

Daimlerring 25
DE-31135 Hildesheim
Germany
Phone: +49 51 21 20 63 60
Fax: +49 51 21 20 636 20

Kolecki Sp. z o.o.

62-002 Suchy Las
ul. Sucholeska 23
Poland
Phone: +48 618 61 68 51
Fax: +48 618 11 53 75

ROL innredning A/S

Industriveien 6
NO-1473 Lørenskog
Norway
Phone: +47 679 123 60
Fax: +47 679 123 70

ROL UK Limited

Private road no 2, Colwick
Industrial Estate, Nottingham
UK-NG4 2JR
United Kingdom
Phone: +44 11 59 61 10 04
Fax: +44 11 59 61 11 29



ROL AB FLYGPLATSVÄGEN 1 | S-555 93 JÖNKÖPING SWEDEN
PHONE +46(0)36 36 88 00 | FAX +46(0)36 36 88 90 | WWW.ROLGROUP.COM

ROL