

rolbox

To increase sales



Display units

WHY **rolbox**?

ROLBOX units are meant for display of goods outdoors: by entrances of petrol stations and shops, in nursery gardens, „mini-markets“ and other marketing locations. They fit well for placing tools, documents and office goods. The units improve visibility of goods, increase sales area and allow anchoring in attractive locations of presentation of goods; thus making them more difficult for access of your competitors.

ROLBOX differ from other display units in their:

- **Durability.** The units are made of galvanized tin sheets only and dyed employing the powder dyeing method. The polyester component protects the dye from discolouration;
- **Versatility.** The variety of unit shelves allows displaying various kinds of goods like car cosmetics or flowers. Or else you may remove the shelves and display goods on the small Euro pallet or right on the base of the unit (e.g., charcoal or grill wood);
- **Safety.** Lockable aluminium profile safety blinds to protect goods from being stolen;
- **Simplicity of assembling.** The products come ready for assembling; all you need to do is to screw 8 or 10 bolts in the right places. The package of each unit contains an easily understandable instruction to save assembling time;
- **Readiness for transport.** All components of the units are packed in cartons to protect them from damage throughout transportation.
- **Mobility.** In case of requirement of a customer, the units can be supplied with adjusters;
- **Ability to express brand identity.** The frame of the units can be covered with any colour indicated in the brand use instruction of a customer.

Sample use of **rolbox**

FLOWERS

The shelves are designed to place six buckets of cut flowers. The bottom shelf is for display of pot flowers.



BULK PRODUCTS

Remove the shelves and you will have a display unit for bulk products like charcoal or grill wood; in case you place a shelf higher above, you can display various goods for outdoor cooking like grill lighter fluids, spits, barbecue grills and other goods.



VARIOUS PRODUCTS

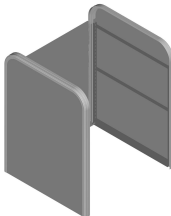

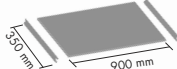
The shelf height can be adjusted within 32 mm. This maximizes versatility of the ROLBOX display units. Construction of the units allows using various accessories. For example, back panel suitable for fitting hooks for various goods like protective gloves, wipers, tools and other.



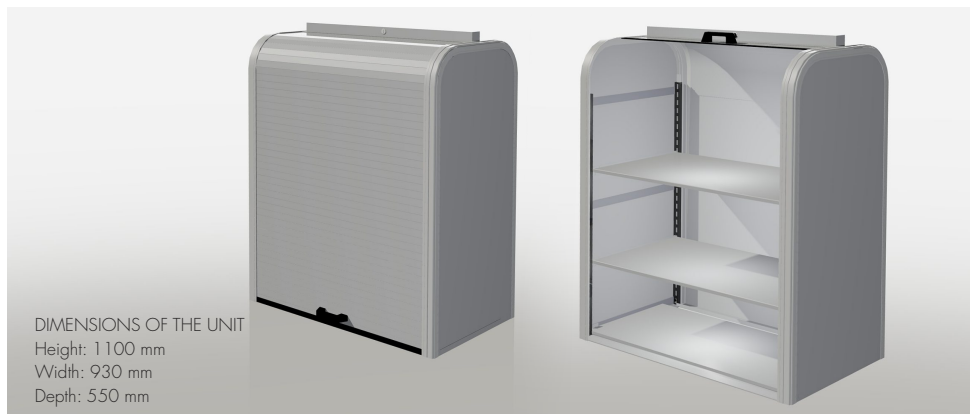
rolbox 850 TECHNICAL SPECIFICATION

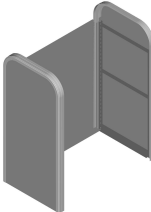

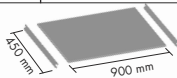


DIMENSIONS OF THE UNIT:
Height: 1100 mm
Width: 930 mm
Depth: 850 mm

Part No.	Description	Component No.	Component description	Amount
39680xx	Packet A: unit frame			
		39662xx	Back frame panel	1
		3092800	Rivet AL/PL 4,0 x12	16
		39660xx	Right side frame panel	1
		39661xx	Left side frame panel	1
		6008100	Package of packet A 1120x880x100	1
		54000876	Package insert of packet A 855x1130	1
		50002096	Package label xxxxxx	1
		3967000	Aluminium profile	2
		3966592	Back frame 784x898	2
		12480300	Assembly instruction	1
39681xx	Packet B: safety blinds + accessories			
		3966492	Bottom plate	1
		3091092	Washer BRB 10x18x2 Fzb HB200	1
		3082300	A set of bolts	1
		6213100	B-Pak Block package of packet B 450x80x40	2
		6213000	B-Pak Block package of packet B 150x150x60	2
		6010100	Package of packet B 930x470x230	1
		50002115	Package label xxxxxx	1
		3967592	Handle	1
		39663xx	Top panel	1
		3061100	Lock	1
		3967700	A set of safety blinds 800 components	1
3968492	Packet C: brackets + shelves			
		1690892	Bracket 450	4
		6210900	Package of packet C 400x900	1
		1406792	Shelf 350	4

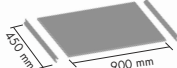
rolbox 550 TECHNICAL SPECIFICATION



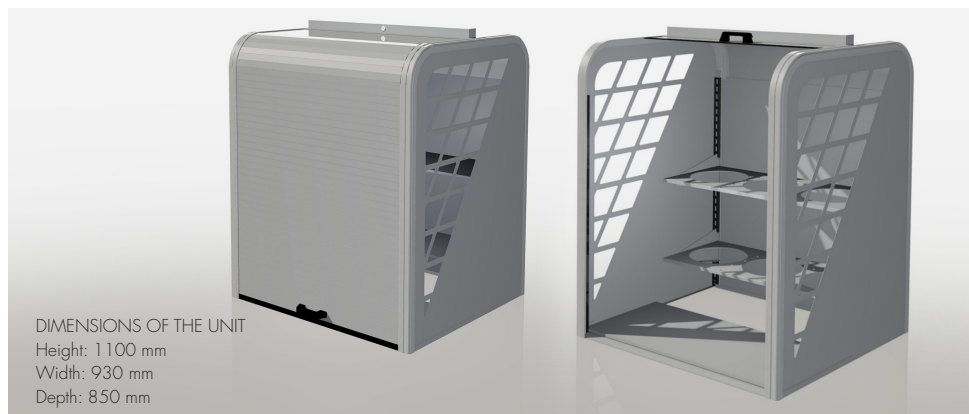
Part No.	Description	Component No.	Component description	Amount
39687xx	Packet A: unit frame			
		3969592	Back frame 484x898	2
		6008100	Package of packet A 1120x880x100	1
		54000876	Package insert of packet A 855x1130	1
		39662xx	Back frame panel	1
		50002099	Package label xxxxxx	1
		39694xx	Left side frame panel	1
		3968500	Aluminium profile	2
		3092800	Rivet AL/PL 4,0 x12	16
		12480300	Unit assembly instruction	1
		39693xx	Right side frame panel	1
39688xx	Packet B: safety blinds + accessories			
		3082300	A set of bolts	1
		3091092	Washer BRB 10x18x2 Fzb HB200	1
		6213100	B-Pak Block package of packet B 450x80x40	2
		6213000	B-Pak Block package of packet B 150x150x60	2
		6010100	Package of packet B 930x470x230	1
		50002121	Package label xxxxxx	1
		39691xx	Top panel	1
		3966492	Bottom plate	1
		3061100	Lock	1
		3967592	Handle	1
		3969700	A set of safety blinds 550 components	1
3968992	Packet C: brackets + 2 shelves			
		1406592	Shelf 450	2
		1690792	Bracket 450	4
		6210900	Package of packet C 400x900	1

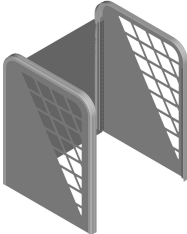

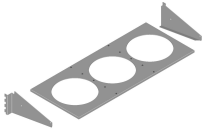


The packet C version with 3 shelves can be chosen as well. For specifications see the table below.

3970192	Packet C: brackets + 3 shelves			
		6210900	Package of packet C 400x900	1
		1406592	Shelf 450	3
		1690792	Bracket 450	6

rolbox 850 GRID TECHNICAL SPECIFICATION



Part No.	Description	Component No.	Component description	Amount
115838xx	Packet A: unit frame			
		12075892	Back frame 784x898	2
		54000876	Package insert of packet A 855x1130	1
		50002093	Package label 11583893	1
		39662xx	Back frame panel	1
		12480300	Unit assembly instruction	1
		120766xx	Right side frame panel	1
		120765xx	Z profile 30x1100	2
		120764xx	Z profile 30x810	2
		6008100	Package of packet A 1120x880x100	1
		12076200	Plastic plate 607x980x45	2
		3967000	Aluminium profile	2
		120757xx	Left side frame panel	1
		120763xx	Z profile 50x460	2
		3092800	Rivet AL/AC 4,0 x12	32
39681xx	Packet B safety blinds + accessories			
		3966492	Bottom plate	1
		3091092	Washer BRB 10x18x2 Fzb HB200	1
		3082300	A set of bolts	1
		6213100	B-Pak Block package of packet B 450x80x40	2
		6213000	B-Pak Block package of packet B 150x150x60	2
		6010100	Package of packet B 930x470x230	1
		50002115	Package label xxxxxx	1
		3967592	Handle	1
		39663xx	Top panel	1
		3061100	Lock	1
		3967700	A set of safety blinds 800 components	1
3968492	Packet C: brackets + flower shelves			
		6648692	A shelf for buckets 829x300	2
		12077592	Right side short bracket 10Dgr	2
		12077492	Left side short bracket 10Dgr	2
		1690792	Bracket 700	2
		1406592	Shelf 450	1
		3077392	Bolt M6S M6x16 Znl	8
		3072892	Nut M6M M6 Znl	8
		3075492	Washer BRB 6.4x12x1.5 Fxb (M6)	16

rolbox ORDERING INSTRUCTION

The instruction will help you to prepare your order quickly and correctly.

The display units comprise of the 3 components below:

- Packet A (frame);
- Packet B (safety blinds);
- Packet C (brackets and shelves).



You can order either full units of all 3 components (A + B + C) or any component individually.

Step 1: choose a model of ROLBOX unit.

Following product descriptions (pages 3-5) please choose a model of ROLBOX unit:

550 /850/850 GRID.

Step 2: choose a unit frame.

Please enter the first five digits of Part No. of the chosen ROLBOX model Packet A and XX in the order form. E.g.:

No.	Part No.	Description	Amount
1.	39687XX	ROLBOX 550 Packet A frame	

Step 3: choose safety blinds.

Please enter the first five digits of Part No. of the chosen ROLBOX model Packet B and XX in the order form.

Step 4: choose shelf/shelves.

Please enter Part No. of the chosen ROLBOX model Packet C in the order form. E.g.:

No.	Part No.	Description	Amount
1.	39687XX	ROLBOX 550 Packet A frame	
2.	39688XX	ROLBOX 550 Packet B safety blinds	
3.	3968992	ROLBOX 550 Packet C brackets + 2 shelves	

Step 5: choose colour of your ROLBOX.

Please choose a two-digit colour code of the colour palette in page 7 and enter it replacing the XX in Part Nos. of the Packets A and B.

Step 6: indicate amounts of the products to be ordered.

Please enter amounts of the products to be ordered in the "Amount" column of the order form. E.g.:

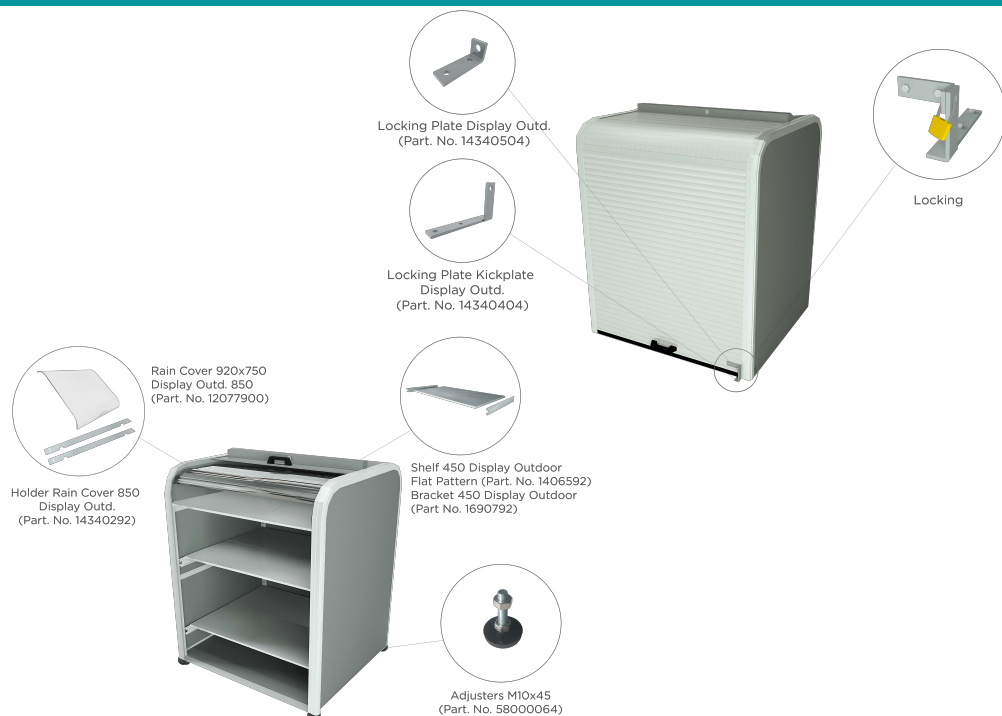
No.	Part No.	Description	Amount
1.	3968793	ROLBOX 550 Packet A frame	30
2.	3968893	ROLBOX 550 Packet B safety blinds	30
3.	3968992	ROLBOX 550 Packet C brackets + 2 shelves	15

Congratulations! You have successfully filled the "Order form" in.

Please send it by e-mail to info@statga.lt.

We will soon contact you and send confirmation of your order.

ADDITIONAL ITEMS TECHNICAL SPECIFICATION



HOW TO CHOOSE A DESIRED COLOUR?

ROL colour palette



Grey 06
NCS S 5010 R90B



Grey 04
NCS S 6010 R90B
(RAL 7031)



Zinc-plating 92



Silver 93
(RAL 9006)



Silvergrey 96
(RAL 9006)



99 Various colors
defined by order



Blue 349



The colours in the booklet hereto cannot be considered reference colours; they may differ from actual colours of the product. Therefore, we recommend choosing colours based on the RAL colour codes and convert the latter to a two-digit number to be entered in the order form.

ROL

www.rolgroup.com



"ROL | STATGA ", UAB

Proclunu Str. 7, Siauliai, Lithuania,

Contact person: Dovile Smindriunaite

E-mail: info@statga.lt

Mobile: +370 650 57966